

Panel 2 Paper 2.1: Rural Landscapes: Farm and Forest Heritage in the 21st century

Patricia O'Donnell

Heritage Landscapes LLC, odonnell@heritagelandscapes.com

Follow this and additional works at: https://scholarworks.umass.edu/icomos_isccl



Part of the [Cultural Resource Management and Policy Analysis Commons](#), and the [Historic Preservation and Conservation Commons](#)

O'Donnell, Patricia, "Panel 2 Paper 2.1: Rural Landscapes: Farm and Forest Heritage in the 21st century" (2019). *Rural Heritage - Landscapes and Beyond / PATRIMOINE RURAL: Paysages et au-delà*. 3.
https://scholarworks.umass.edu/icomos_isccl/2019/papers/3

This Paper in a panel / paper dans un panneau is brought to you for free and open access by ScholarWorks@UMass Amherst. It has been accepted for inclusion in Rural Heritage - Landscapes and Beyond / PATRIMOINE RURAL: Paysages et au-delà by an authorized administrator of ScholarWorks@UMass Amherst. For more information, please contact scholarworks@library.umass.edu.

RURAL HERITAGE- LANDSCAPES AND BEYOND PATRIMOINE RURAL - PAYSAGES ET AU-DELÀ

Rural Landscapes: Farm and Forest Heritage in the 21st century
Patricia M. O'Donnell, FASLA, AICP, F. US-ICOMOS

ICOMOS Advisory Committee Scientific Symposium
Symposium scientifique du Conseil consultatif de l'ICOMOS
17 October 2019 at Marrakesh, Morocco
17 octobre 2019 à Marrakech, Maroc

Challenges for Rural Farms of Productive Landscapes

Défis pour les fermes rurales de paysages productifs



- No farmers no food - Pas d'agriculteurs, pas de nourriture
- Sustain culture/society/economy/environment - Soutenir culture / société / économie / 'environnement
- Improve land tenure security - Améliorer la sécurité du régime foncier
- Increased monoculture farming - Augmentation de la monoculture
- Decrease diverse small plot farming - Diminuer la diversité des petites exploitations agricoles

Challenges for Rural Farmers of Productive Landscapes

Défis pour les agriculteurs ruraux de paysages productifs

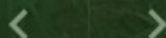


- Hard work, difficult daily life – Travail dur, quotidien difficile
- Financially feasible Land – Terrain financièrement réalisable
- Few young farmers - Peu de jeunes agriculteurs
- Community support - Soutien communautaire
- Market access, sufficient income - Accès au marché, revenu suffisant
- Climate, weather, soil, water - Climat, météo, sol, eau

USA Example CSAs - États-Unis Exemple ASC



- Community Supported Agriculture - Agriculture soutenue par la communauté
- Annual fee for weekly produce - Frais annuels pour les produits hebdomadaires
- Provides farmer income stream - Fournit un flux de revenus aux agriculteurs
- Improves fresh food access, health - Améliore l'accès aux aliments frais, la santé



Land Bargain Sale for Young Farm Family

Vente aux enchères de terres pour une jeune famille d'agriculteurs

8 DECENT WORK AND
ECONOMIC GROWTH

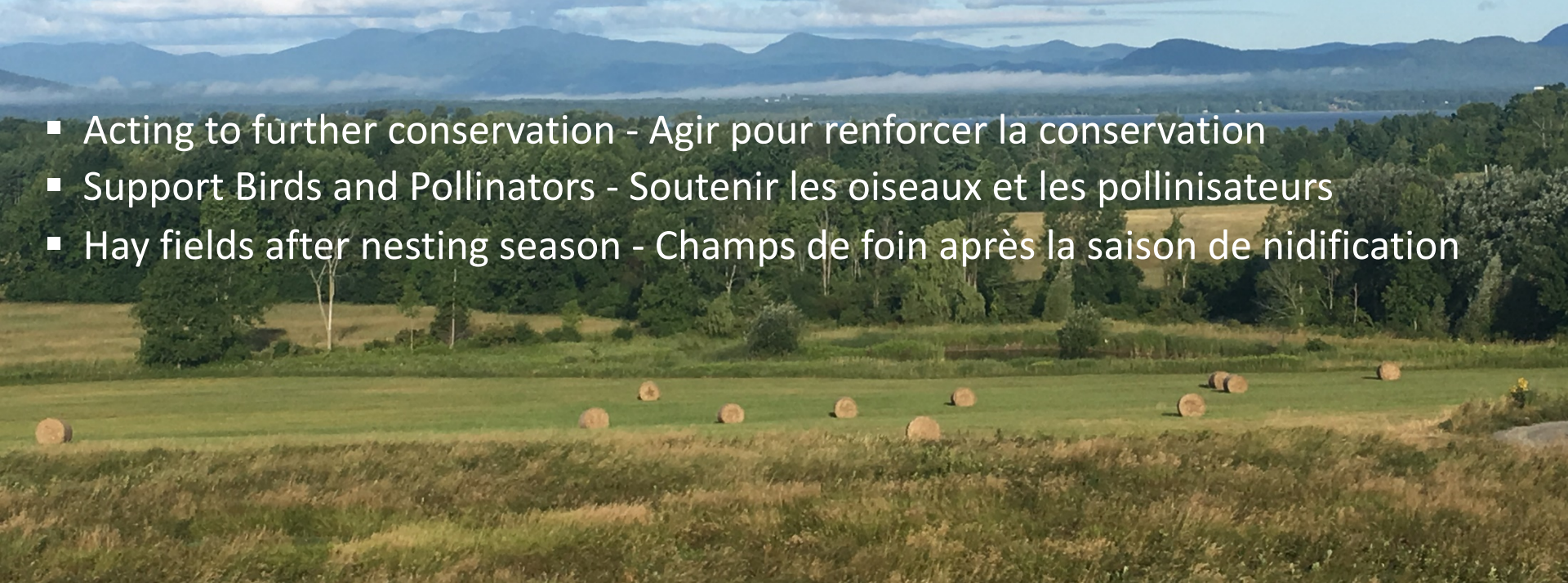


- Retiring Farmer Sells Land - Un fermier qui se retire vend des terres
- Charlotte Land Trust provides funds - Charlotte Land Trust fournit des fonds
- Young farm family pays lower price - Jeune famille d'agriculteurs paye moins cher
- Farm land conserved - Terres agricoles conservées

Farm Fields Bird Habitat - Habitat des oiseaux de la ferme



- Acting to further conservation - Agir pour renforcer la conservation
- Support Birds and Pollinators - Soutenir les oiseaux et les pollinisateurs
- Hay fields after nesting season - Champs de foin après la saison de nidification



Sustainable Agriculture Learning Partnerships

Partenariats d'apprentissage en agriculture durable



- Shelburne Farms, Vermont USA Greater Burlington Sustainability Education Network
- Regional Center of Expertise - Centre régional d'expertise
- Host All Americas RCE Meeting – RCE Réunion de toutes les Amériques
- 168 RCEs globally promote education, training - 168 RCE encouragent l'éducation et la formation dans le monde

Vectors of Forest Loss - Vecteurs de perte de forêt



- 9-24-19 forest fire near Indonesia village - incendie de forêt près du village d'Indonésie
- Slash and burn farming - Agriculture sur brûlis
- Forest fires, CO2 Emissions- Incendies de forêt, émissions de CO2
- Direct climate change link - Lien direct sur le changement climatique

Latin American Landscape Initiative - SOS Amazon

Initiative de paysage latino-américain - SOS Amazon

The Amazon is the largest rainforest on the planet. The ancestral home of a million indigenous people; 450 different native societies, each with their own language, culture and territory.

Home to more than 40,000 species of plants, 1,300 birds, 3,000 fish, 430 mammals and 2.5 million different insects; It is part of 9 countries_ Brazil, Bolivia, Colombia, Peru, Ecuador, Venezuela, Guyana, Suriname and French Guiana. ... providing 20% of the planet's oxygen, today suffers from the devastating consequences of fire, and anthropic action.

The Latin American Landscape Initiative LALI calls for its preservation, conservation, and sustainable management; what happens in the Amazon has no borders and should attract everyone's attention. In the midst of this global climate crisis, we cannot afford to end its mega-diversity, its extensive hydrological system, its forests, its ancestral cultures.



- LALI organizing citizen action raising awareness - LALI organise des actions citoyennes de sensibilisation
- Sustain and increase forest conservation - Maintenir et accroître la conservation des forêts
- Forests carbon sinks combat climate change - Puits de carbone forestiers combattent le changement climatique
- Habitat retention, species diversity - Conservation de l'habitat, diversité des espèces
- Medical-culinary forest plants science traditions - Plantes forestières médico-culinaires traditionnelles

Burnt Mountain Forest Preserve Vermont USA

Réserve forestière de Burnt Mountain, Vermont USA



Early estimates suggest that the parcel will yield over 236,772 credits in 10 years (1 credit = 1 metric ton of carbon), equal to removing 38,000 cars from the road. The carbon storage project is anticipated to generate \$2 million in revenue over ten years, to support forest conservation.

- Nature Conservancy
- 5,500-acres “forever wild” easement - 5 500 acres de servitude « toujours sauvage »
- Polluters purchase carbon credits - Les pollueurs achètent des crédits de carbone
- Funds sustain forest conservation - Les fonds soutiennent la conservation de la forêt

UN Environment-The World Bank-Germany

Global Landscapes Forum-Forum mondial sur les paysages

FUNDING PARTNERS



CHARTER MEMBERS



- **Global Landscapes Forum-** Taking a Landscape Approach- seeking to balance competing land use demands, for human well-being and the environment. Creating solutions that consider food and livelihoods, finance, rights, restoration and progress towards climate and development goals.
- **Forum mondial sur les paysages -** Adopter une approche paysagère - cherchant à équilibrer les demandes d'utilisation des sols, de bien-être humain et d'environnement. Créer des solutions qui tiennent compte de l'alimentation et des moyens de subsistance, des finances, des droits, de la restauration et des progrès en direction du climat et des objectifs de développement.
- Guided by Agenda 2030, SDGs and Paris Agreement - Guidé par l'Agenda 2030, les ODD et l'Accord de Paris

Farms, Forests the Way Forward

Fermes et forêts, la voie à suivre

- Activate SDGs locally – Activer les SDGs localement
- Innovate to be sustainable - Innover pour être durable
- Fund action, Global Landscapes Forum - Action de financement
- Employ carbon credits- Employer des crédits carbone
- Foster conservation, best practices anglais -Favoriser la conservation, les meilleures pratiques
- Alleviate farm family poverty SDG 8 - Réduire la pauvreté des familles d'agriculteurs SDG 8
- Advocate for productive landscapes, LALI - familles d'agriculteurs
- Support traditions - Soutenir les traditions

